

VCPROBE-NIR-DSD



ANGULAR MEASUREMENT FOR:

LIDAR

VCSEL

STRUCTURED
LIGHT

TIME
OF
FLIGHT



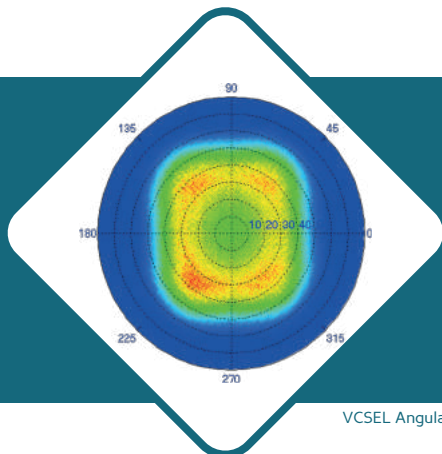
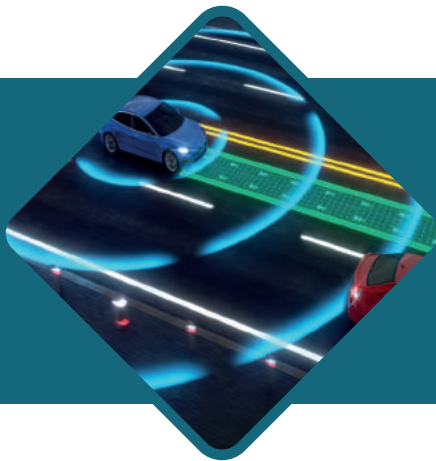
ELDIM

VCPProbe-NIR-DSD

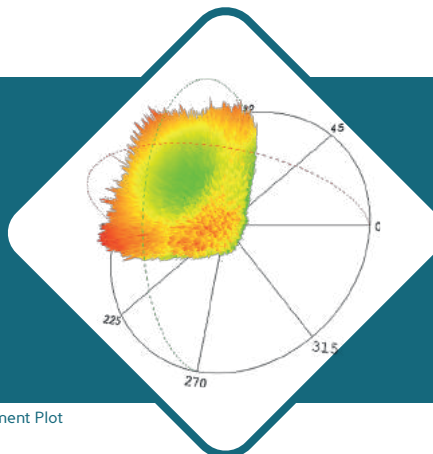
Specifications		VCPProbe-NIR-DSD
Wavelength	<i>Intensity (absolute)</i>	Calibrated at 850nm - 915nm - 940nm
Viewing Angle	<i>Incident angle Azimuth angle</i>	$\pm 32^\circ$ 0-360°
Working distance		40 mm
Performances	<i>Optical resolution Linearized data</i>	0.03° 2801*2801
Iris Size	<i>Optimized for sample of</i>	0.5mm / 1 mm / 2.5mm
Focus Distance		1000mm
Accuracy	<i>Radiance (w/str/m²) Power (watt)</i>	$\pm 2\%$ $\pm 1\%$
Takt time	<i>Exposure time Processing Transfer time</i>	300ms - 30s Less than 1 s
Using condition	<i>Temperature range Humidity range</i>	10°C to +40°C 0 to 85% non condensing

Specifications can be change without notice

APPLICATIONS



VCSEL Angular Measurement Plot



RESULTS



ELDIM